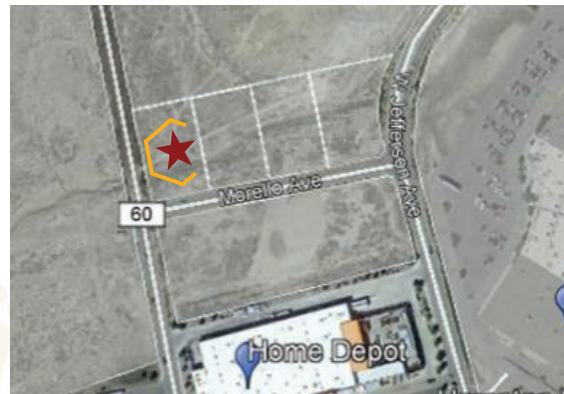


Morello Avenue & Kachina Street Gallup, New Mexico 87301

\$605,705

Parcel #: R214008

1.079 Acre Commercial Zoned Lot One of four available adjacent parcels



Located in the heart of an extremely active retail shopping area with heavy traffic flow and excellent business exposure.

Direct access to I40.

688 feet of road frontage on Morello Avenue and 800 feet of road frontage along Kachina Street.

Situated among three similar-sized parcels of land, this lot is available for singular or bundled purchase at attractive pricing.

Level topography with adequate drainage.

Features include:

This parcel is located in a well-established commercial neighborhood consisting of newer buildings with improvements such as asphalt paved streets, concrete curbs, sidewalks, street lighting, and all municipal utilities. Morello Avenue and Kachina Street surround this corner parcel on two sides, creating approximately 1,488 feet of combined street frontage. In its current condition only moderate site preparation will be required for this property to become buildable. Attractive pricing option available for purchase of all four parcels totaling 4.415 acres. This parcel may be subdivided.

Please contact us for more information about this and other available properties.

