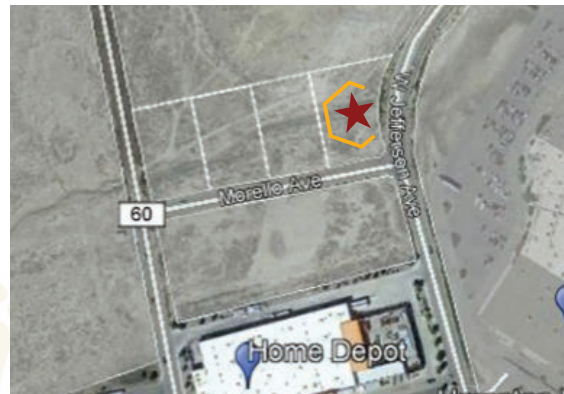


Morello & West Jefferson Avenues Gallup, New Mexico 87301

\$629,700

Parcel #: R300403

1.178 Acre Commercial Zoned Lot One of four available adjacent parcels



Located in the heart of an extremely active retail shopping area with heavy traffic flow and excellent business exposure.

Direct access to I40.

Trapezoidal-shaped property with road frontage along Morello Avenue and West Jefferson Avenue.

The largest "sister parcel" of the four, this lot is available for singular or bundled purchase at attractive pricing.

Property inclines upwardly towards the back end, but this does not impact its usage.

Features include:

This parcel is located in a well-established commercial neighborhood consisting of newer buildings with improvements such as asphalt paved streets, concrete curbs, sidewalks, street lighting, and all municipal utilities. This corner parcel has street exposure from Morello Avenue and West Jefferson Avenue on two of its sides. In its current condition only moderate site preparation will be required for this property to become buildable. Attractive pricing option available for purchase of all four parcels totaling 4.415 acres. This parcel may be subdivided.

Please contact us for more information about this and other available properties.

