

Gallup Energy Logistics Park

An Energy and Logistics Hub for the Four Corners Region

Gallup Energy Logistics Park, LLC (GELP) is a rail-served industrial park ideally located to serve the transloading, light manufacturing, storage, and logistics industries of the San Juan Energy Basin and the Four Corners region of New Mexico.

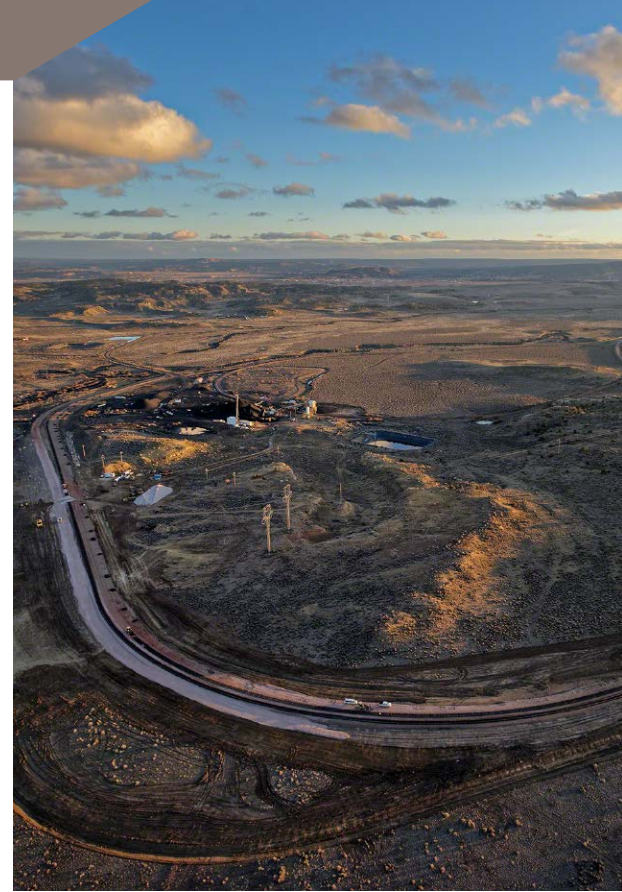
Strategically located northwest of the city of Gallup, New Mexico, GELP serves as a logistics hub and offers direct access to the Burlington Northern Santa Fe (BNSF) Railway's Southern Transcon Line and interstate transportation, including I-40, and highways 491 and 602. In early 2021, construction will begin on a four-lane road which will provide quick access to the Four Corners region and create a rapidly developing economic corridor. GLP Commercial currently has properties available along this corridor and around the rail that are ideal for businesses requiring quick rail access.

The location is accessible to a capable and available workforce, and is permitted for heavy industrial development, making it an ideal location for:

- Material storage
- Trans loading
- Rail car storage
- Manufacturing
- Logistics
- Trucking operations
- Cart maintenance and repair



— BNSF railways



GELP AT A GLANCE

2,500-acre	logistics park in McKinley County, New Mexico
2	rail loops currently serving the coal, crude oil, sand, and lumber industries
11,000	linear feet of new rail
365-acre	parcel is BNSF certified
2,500	acres of expansion capability



GALLUP ENERGY LOGISTICS PARK, LLC



Rail Served and Ready for Rapid Expansion

A 365-acre parcel of GELP is one of a small number of sites across the country that has received the BNSF Railway's prestigious site certification, which ensures the site is "rail served and shovel ready" for rapid acquisition and development. The BNSF awards the certification following a comprehensive evaluation of existing and project infrastructure, environmental and geotechnical standards, utility evaluation, and site availability.

Selecting a certified site:

- Reduces development time
- Increases speed to market
- Lessens upfront development risk



For more information about the Gallup Energy Logistics Park, please contact Martin O'Malley, General Manager, or visit our website at EnergyLogisticsPark.com

Gallup Land Partners, LLC
605 N. 9th Street, Gallup, NM 87301